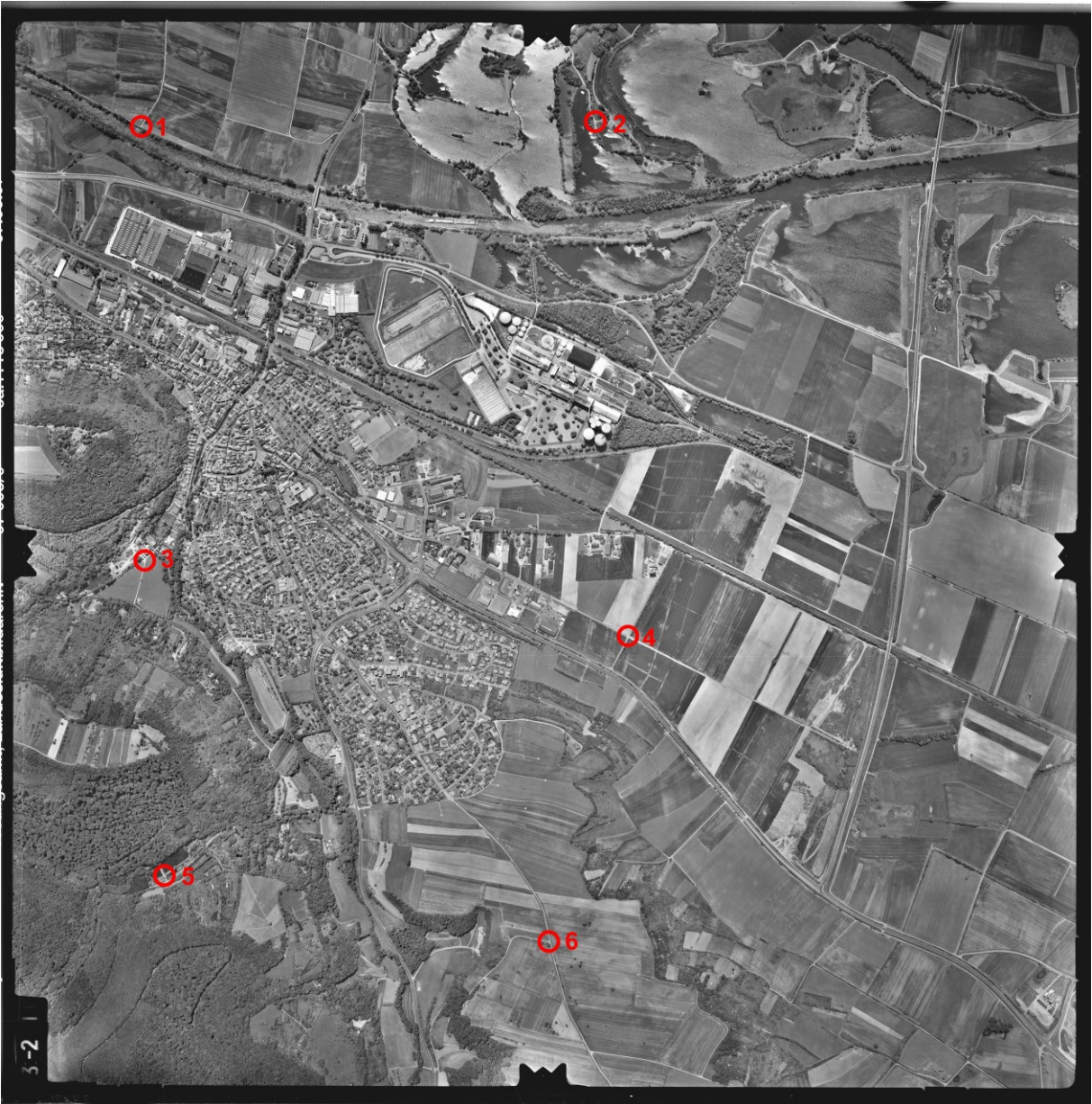


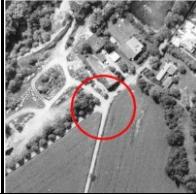





Koordinaten im Gauß-Krüger-Koordinatensystem für Stereobildpaar "Bayern"



Punkt-Nr.	X [m]		Y [m]		Z [m]	
1	43	99759.40	55	41309.03	219.07	
2		98180.93		41334.00	219.39	

3		99768.75		42825.96	229.25	
4		98103.55		43116.59	222.14	
5		99707.74		43905.04	252.75	
6		98392.87		44142.18	283.67	

Kamerakonstante der Luftbildkamera: $c_k = 304.838$ mm
Pixelgröße des digitalen Bildmaterials: $40\mu\text{m}$